

Support for every project



Clamp for roof anchor

This clamp has been designed for attaching roof anchors to the Sunbeam Nova mounting system. Easy to mount with a single screw and to use on sloping roofs or when the system needs any additional security.

Anchor profile

A simple and ballast-free installation is possible with the anchor profile. These profiles are nestable, which allows for a side-by-side installation. By resting the anchor on two beams, the Sunbeam Nova system requires few anchors for a safe result. Installation speed is a top priority for this accessory.



Knee support

With the help of our knee support, you can safely install the Sunbeam Nova mounting system in snowy areas such as Northern Europe, Switzerland and/or Austria. By reinforcing the knee, it can handle a higher snow load and can easily be mounted under the carrier.

Available for all Sunbeam Nova landscape systems.



Since 2020, our organization has been CO₂ neutral. Our sustainable mounting systems – Sunbeam Nova and Sunbeam Luna – are certified and have been awarded the 'Climate Neutral Product' label by the Climate Neutral Group. Sunbeam is the first Dutch company in its sector to receive this certificate. We have mapped out the CO₂ emissions of our production chain from the extraction of the iron ore to the end of our products' lifespan. We reduce these emissions and compensate for what remains. For us, this goes without saying. After all, if you go for sustainable energy, you should also go for a sustainable mounting system.

Sunbeam Nova Accessories



Sunbeam Nova accessories: faster, simpler and safer

Sunbeam supports customers in realising their sustainable projects. For our Sunbeam Nova mounting system, we have a range of accessories that make installing solar panels on flat roofs even quicker, easier and safer.



Side plate

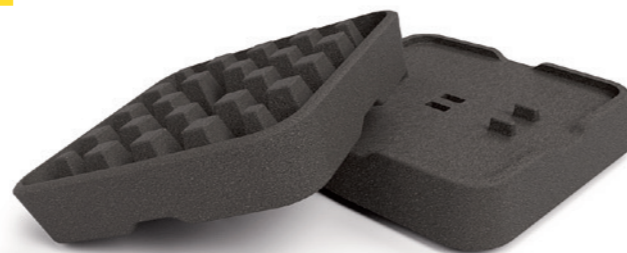
Complete your installation with Sunbeam's side plates. Cables are easy to manage with the integrated cable grommet.

Available for all Sunbeam Nova landscape systems, also in a black finish.

Booster foot

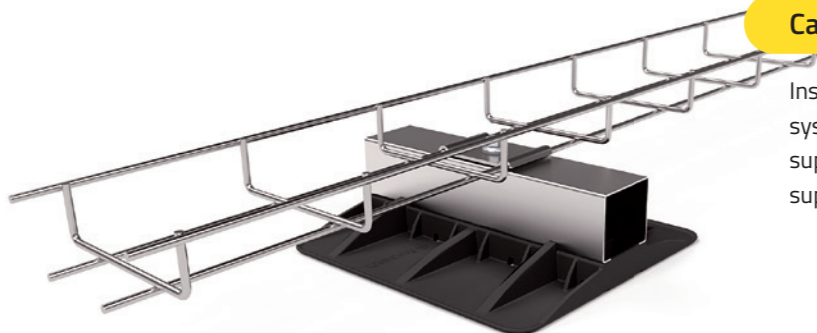
The Sunbeam mounting systems can easily be used on slightly sloping roofs. Using the Booster foot, systems with a roof pitch up to 5° can safely be installed.

The Booster foot is universally applicable and fits all Sunbeam Nova systems. The Booster foot can also be used to raise the pitch on gravel roofs for proper drainage.



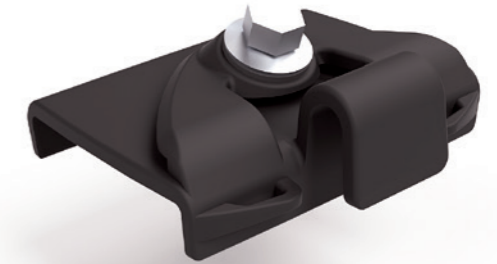
Cable duct support

Installing cable ducts at the same height as the mounting system is possible thanks to Sunbeam's cable duct support. This multi-purpose solution can also be used to support long ballast plates.



Optimiser clip

With the optimiser clip, you can quickly, easily and safely attach optimisers and micro-inverters to Sunbeam Nova systems. The optimiser clip is suitable for most small optimisers / micro-inverters such as those by SolarEdge and Huawei.

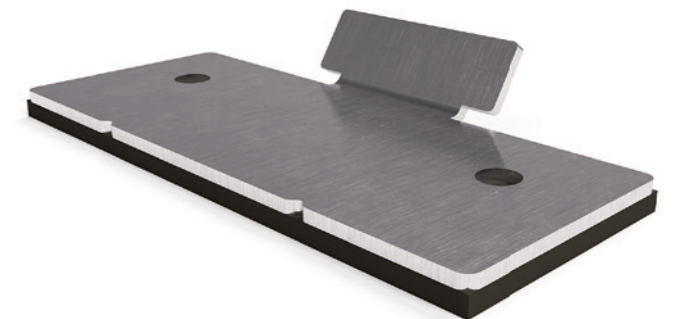


Mini clip

A separately available clip for securing cables, in addition to the standard cable clips mounted under the carriers. This clip is universally applicable and can be clamped onto ballast and wind plates as well as onto the panel edge. The Mini clip is easy to attach and clamps extremely well thanks to the steel insert. With the Sunbeam Mini clip, cable ties become superfluous!

Friction plate

The familiar Sunbeam Nova system can be easily and safely installed onto steel roofs with the friction plates, which can be used on flat and slightly sloping roofs. The friction plates can be mounted quickly and easily in the position where you would normally click in the foot. Because of the attachment to the steel roof, the Sunbeam Nova system can usually be installed ballast-free.



Pitched roof clamp

Installing a Sunbeam Nova system on pitched roofs is possible with the pitched roof clamp. These universal clamps are easy to use on almost all pitched roofs, such as a Kalzip roof. The pitched roof clamp can also be used under cable ducts and other materials that need to be mounted safely onto the roof. Naturally, Sunbeam is happy to help you with your project.

