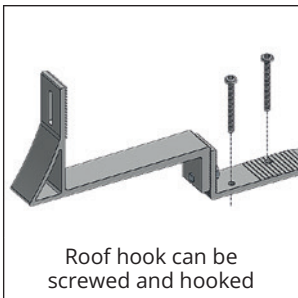
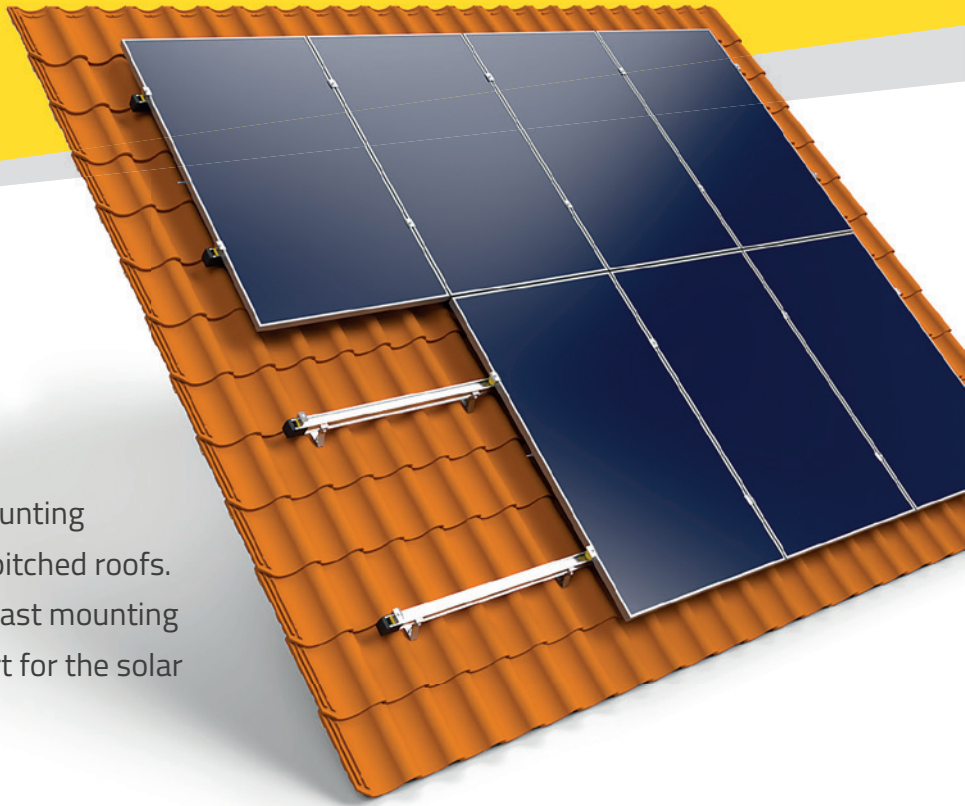


Sunbeam Luna Tiled roof

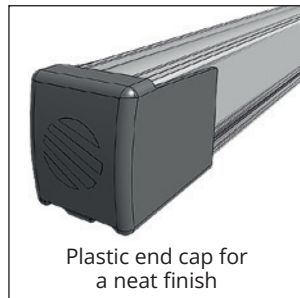
Product sheet

Installing solar panels? Start with the basics!

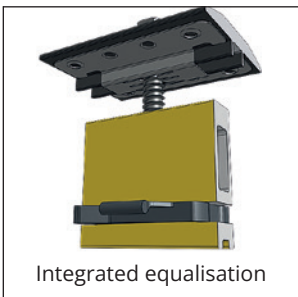
Sunbeam Luna is a well-designed mounting system for installing solar panels on pitched roofs. Its clever construction enables ultra-fast mounting and provides optimal and safe support for the solar modules.



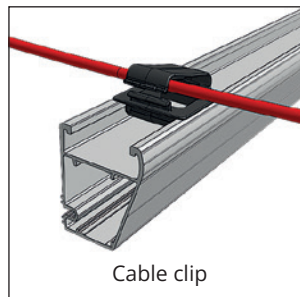
Roof hook can be
screwed and hooked



Plastic end cap for
a neat finish



Integrated equalisation



Cable clip

Innovative features

- universal roof hook can be screwed and hooked
- easy and swift connection between hook and profile
- pre-assembled clamps
- optional cable clamps for cables in all directions
- no sharp edges and the cables are always protected
- suitable for all regular roof tiles
- 30 mm height adjustment to compensate for undulating roofs
- good panel ventilation and space for all optimisers and micro inverters

Sunbeam Luna is an entirely carbon-neutral certified product



A solution for every project

Sunbeam Luna: the innovative mounting system for placing solar panels on pitched roofs

- Luna was developed to provide maximum support with a minimum of high-quality materials.

General features	
materials used	high-quality aluminium, plastic (PS, HDPE) from recycled raw materials, SS screws
panel orientation	portrait (clamps on the long sides) and landscape (clamps on the short sides)
suitable roof type	tiled roof
mounting	roof hook, hooked behind the batten, or screwed to the roof boarding
load	maximum to 2,400 Pa tensile and 5,400 Pa pressure on max. 2.3 m ²
warranty	see warranty period and specific warranty conditions at: www.sunbeam.solar/downloads

Technical specifications
<ul style="list-style-type: none">▪ suitable for panel thicknesses of 30, 35 and 40 mm▪ 50 mm clamp width▪ space between the panels is 10 mm▪ thickness of batten + roof tile is 35 – 60 mm, inclusive▪ mounting rails available in 3,600 mm and 5,900 mm lengths▪ roof angle from 10 – 75 degrees, inclusive▪ cable management with optional cable clips

